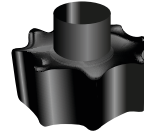


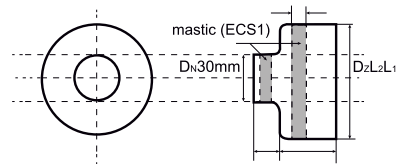
Heat - Shrinkable Joints

ECS1 heat-shrinkable cross-linked end caps with mastic, for single pipes

The ECS1 end cap is designed to protect ends of pre-insulated pipes and PUR insulation from water/moisture penetration in chambers, district-heating nodes, basements, etc. It secures perfect sealing and easy and quick assembly.



Place the ECS1 end cap on the pre-insulated pipe prior to its connection to the internal installation and shrink both onto the jacket pipe and onto the carrier pipe (steel or plastic).



JACKET PIPE ECS1 external diameter DZ: (mm)	STEEL PIPE diameter DN (mm)	Shrinkage on the jacket pipe max / min Dwmax / Dwmin (mm)	Shrinkage on the steel pipe max / min Dwmax / Dwmin (mm)	ECS1 dimensions L1 / L2 (mm)	Biosteel part no.
90	20/25	98/70	40/24	60/40	ECS1-90
110	25/32/40	118/85	53/20	60/40	ECS1-110
125	40/50	133/95	64/42	60/40	ECS1-125
140	50/65	150/110	82/49	60/40	ECS1-140
160	65/80	170/120	96/54	80/50	ECS1-160
180	80	189/140	122/56	80/50	ECS1-180
200	80/100	209/140	122/59	80/50	ECS1-200
225	100/125	234/180	149/78	80/50	ECS1-225
250	125/150	260/195	178/85	80/50	ECS1-250
280	150	293/240	232/140	80/50	ECS1-280
315	150/200	328/240	232/140	80/50	ECS1-315
355	200	370/308	282/158	80/50	ECS1-355
400	200/250	415/308	282/158	80/50	ECS1-400
450	250/300	465/392	334/220	80/50	ECS1-450
500	300/350	515/445	364/275	100/70	ECS1-500
520	350/400	575/480	416/325	100/70	ECS1-520
560	350/400	575/480	416/325	100/70	ECS1-560
630	400/450	645/550	470/356	100/70	ECS1-630

biosteel a/s

Algade 35, Grønbjerg · DK-6971 Spjald, Denmark
+45 4027 8099 · info@biosteel.dk · www.biosteel.dk